

**NOTES:**

1. THIS LIGHT PIPE ASSEMBLY TO BE USED WITH THE FOLLOWING 1X2 GANGED CAGE ASSEMBLIES:

747220001 - 1X2 GANGED CAGE ASSEMBLY W/ PRESS FIT LEGS (REFER TO DOCUMENT SD-74722-001 FOR CAGE DETAILS)

2. IT IS RECOMMENDED THAT THE CAGE ASSEMBLY BE PRESSED INTO THE PCB PRIOR TO ASSEMBLING THE LIGHT PIPE ASSEMBLY.

3. LED'S TO HAVE A MAXIMUM HEIGHT OF 1.4mm AND A MINIMUM HEIGHT 0.7mm.

4. RECOMMENDED LED'S INCLUDE THE FOLLOWING MANUFACTURERS:

- DIALIGHT: 597-77x1-5xx SERIES
- CHICAGO MINIATURE: 7016 SERIES
- KINGBRIGHT: APBL3025 SERIES (BICOLOR)
- APL3015 SERIES (SINGLE COLOR)

5. MATERIAL:

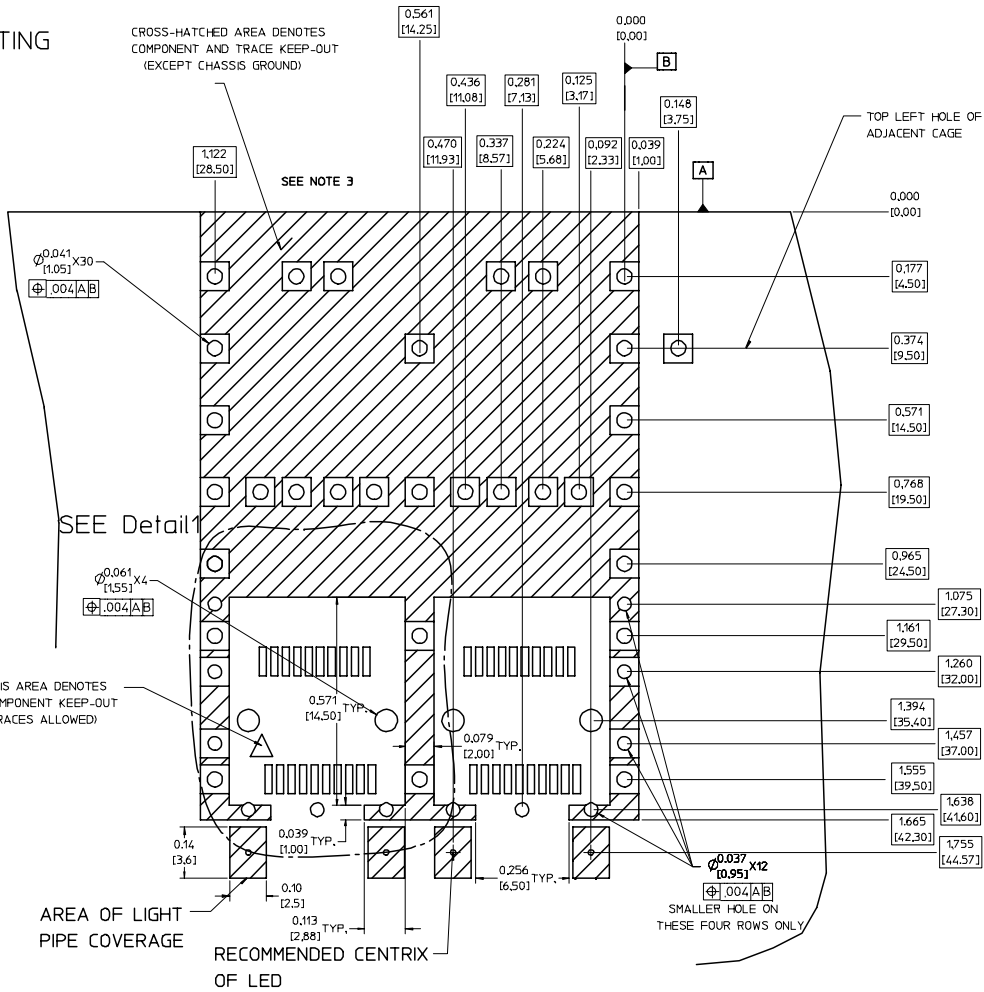
- SHEET METAL COVER: COPPER ALLOY
- LIGHT PIPE: UL94-V2 RATED PLASTIC

6. THIS PART MEETS THE RESTRICTION OF HAZARDOUS SUBSTANCES IN ELECTRICAL AND ELECTRONIC EQUIPMENT (ROHS) DIRECTIVE (2002/95/EC).

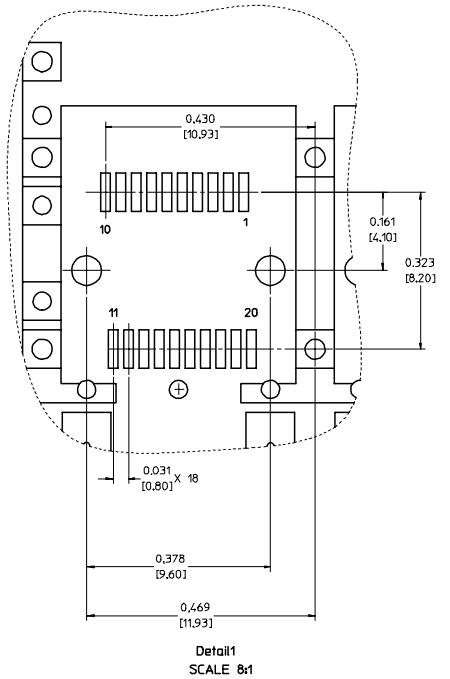
<b>ENTER DESCRIPTION</b> EC NO: USY2008-0195 DRAWN BY: DRWNGHRSR 2007/10/22 CHKDR: RHM 2007/11/01 APPR: RHM 2007/11/01	QUALITY SYMBOLS	GENERAL TOLERANCES (UNLESS SPECIFIED)	DIMENSION STYLE	SCALE	DESIGN UNITS	THIRD ANGLE PROJECTION																	
	$\nabla=0$ $\nabla=0$	<table border="1"> <tr> <th></th> <th>mm</th> <th>INCH</th> </tr> <tr> <td>4 PLACES</td> <td>± .10</td> <td>± .005</td> </tr> <tr> <td>3 PLACES</td> <td>± .13</td> <td>± .01</td> </tr> <tr> <td>2 PLACES</td> <td>± .25</td> <td>± .01</td> </tr> <tr> <td>1 PLACE</td> <td>± .25</td> <td>± .01</td> </tr> <tr> <td>ANGULAR</td> <td colspan="2">± 1 °</td> </tr> </table>		mm	INCH	4 PLACES	± .10	± .005	3 PLACES	± .13	± .01	2 PLACES	± .25	± .01	1 PLACE	± .25	± .01	ANGULAR	± 1 °		IN/MM 4:1	METRIC	
		mm	INCH																				
	4 PLACES	± .10	± .005																				
3 PLACES	± .13	± .01																					
2 PLACES	± .25	± .01																					
1 PLACE	± .25	± .01																					
ANGULAR	± 1 °																						
DESCRIPTION	DRAFT WHERE APPLICABLE MUST REMAIN WITHIN DIMENSIONS		DRAWN BY: KS IMONSO CHECKED BY: BRUSSELL APPROVED BY: BRUSSELL	DATE: 2004/07/08 DATE: 2004/07/08 DATE: 2004/07/08	TITLE: 1X2 SFP LIGHT PIPE ASSEMBLY, BACK-TOP MOLEX INCORPORATED																		
REV			MATERIAL NO: 747270001 SIZE: D	DOCUMENT NO: SD-74727-001	SHEET NO: 1 OF 5																		

# PCB LAYOUT FOR BELLY TO BELLY MOUNTING

CROSS-HATCHED AREA DENOTES  
COMPONENT AND TRACE KEEP-OUT  
(EXCEPT CHASSIS GROUND)



## HOST CONNECTOR DETAIL



Detail1  
SCALE 8:1

**NOTES:**

1. PADS AND VIAS GO TO CHASSIS GROUND.
2. CAGE MOUNTING THRU HOLES (34 PLACES) TO BE PLATED.
3. HOLE PATTERN REPEATS FOR EACH PORT, SPACING BETWEEN PORTS IS .561 [14.25].

<b>ENTER DESCRIPTION</b> EC NO: UST2008-095 DRAWN BY: DRANKHRSR 2007/10/22 CHECKED BY: CHKDRANKHRSR 2007/11/01 APPR: RANKHRSR 2007/11/01 DESCRIPTION	QUALITY SYMBOLS	GENERAL TOLERANCES (UNLESS SPECIFIED)	DIMENSION STYLE	SCALE	DESIGN UNITS	THIRD ANGLE PROJECTION	
	$\nabla=0$ $\nabla=0$	mm INCH 4 PLACES ± --- ± --- 3 PLACES ± --- ± .005 2 PLACES ± 0.13 ± .01 1 PLACE ± 0.25 ± --- ANGULAR ± 1 °	IN/MM	6:1	METRIC		
			DRAWN BY: KS IMONSO CHECKED BY: BRUSSELL APPROVED BY: BRUSSELL	DATE: 2004/07/08 DATE: 2004/07/08 DATE: 2004/07/08		TITLE: 1X2 SFP LIGHT PIPE ASSEMBLY, BACK-TOP	
			MATERIAL NO: 747270001 DOCUMENT NO: SD-74727-001			MOLEX INCORPORATED	SHEET NO: 2 OF 5
DRAFT WHERE APPLICABLE MUST REMAIN WITHIN DIMENSIONS		THIS DRAWING CONTAINS INFORMATION THAT IS PROPRIETARY TO MOLEX INCORPORATED AND SHOULD NOT BE USED WITHOUT WRITTEN PERMISSION					

# PCB LAYOUT FOR SINGLE SIDE MOUNTING

CROSS-HATCHED AREA DENOTES  
COMPONENT AND TRACE KEEP-OUT  
(EXCEPT CHASSIS GROUND)

SEE NOTE 3

THIS AREA DENOTES  
COMPONENT KEEP-OUT  
(TRACES ALLOWED)

AREA OF LIGHT  
PIPE COVERAGE

RECOMMENDED CENTRIX  
OF LED

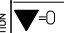
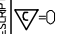


TOP LEFT HOLE  
OF ADJACENT CAGE

- NOTES:
1. PADS AND VIAS GO TO CHASSIS GROUND.
  2. CAGE MOUNTING THRU HOLES (19 PLACES) TO BE PLATED.
  3. HOLE PATTERN REPEATS FOR EACH PORT.  
SPACING BETWEEN PORTS IS .561 [14.25].

<b>ENTER DESCRIPTION</b> EC NO: US72008-0095 DRAWN BY: DRWINCHIRSHY 2007/10/22 CHKDR: RAYWOOD 2007/11/01 APPR: RAYWOOD 2007/11/01 DESCRIPTION:	QUALITY SYMBOLS	GENERAL TOLERANCES (UNLESS SPECIFIED)	DIMENSION STYLE	SCALE	DESIGN UNITS	THIRD ANGLE PROJECTION
	▽=0 ▽=0	4 PLACES ± --- ± --- 3 PLACES ± --- ± .005 2 PLACES ± 0.13 ± .01 1 PLACE ± 0.25 ± --- ANGULAR ± 1 °	IN/MM INCH	6:1	METRIC	DATE DATE DATE DATE
			DRAWN BY: KS IMONSO CHECKED BY: BRUSSELL APPROVED BY: BRUSSELL	DATE: 2004/07/08 DATE: 2004/07/08 DATE: 2004/07/08		TITLE: 1X2 SFP LIGHT PIPE ASSEMBLY, BACK-TOP
			MATERIAL NO: 747270001 DOCUMENT NO: SD-74727-001			MOLEX INCORPORATED SHEET NO: 3 OF 5
DRAFT WHERE APPLICABLE MUST REMAIN WITHIN DIMENSIONS		THIS DRAWING CONTAINS INFORMATION THAT IS PROPRIETARY TO MOLEX INCORPORATED AND SHOULD NOT BE USED WITHOUT WRITTEN PERMISSION				



DATE	REV	CHANGES	COMMENTS
2003/12/09	1	PRELIMINARY DOCUMENT	N/A
2004/07/08	A	INITIAL RELEASE	N/A
2005/06/03	B	CORRECTED P/N FOR DIALIGHT LED. UPDATED DIMENSIONS.	DOCUMENT CHANGE ONLY
2005/06/10	C	UPDATED VIEWS TO SHOW CLEARANCE HOLES ADDED TO THE COVER.	N/A
2007/10/22	D	ADDED COMPONENT MATERIAL INFORMATION TO NOTES SECTION OF SHEET 1	DOCUMENT CHANGE ONLY

<b>ENTER DESCRIPTION</b> EC NO: USY2008-0195 DRAWN BY: DRWINGHIRSHY 2007/10/22 CHECKED BY: CHFKORAHMOOD 2007/11/01 APPROVED BY: APRPR:RMAHMOOD 2007/11/01	<b>QUALITY SYMBOLS</b>  = 0  = 0.05	<b>GENERAL TOLERANCES (UNLESS SPECIFIED)</b> <table border="1"> <thead> <tr> <th></th> <th>mm</th> <th>INCH</th> </tr> </thead> <tbody> <tr> <td>4 PLACES</td> <td>± .005</td> <td>± .0005</td> </tr> <tr> <td>3 PLACES</td> <td>± .005</td> <td>± .0005</td> </tr> <tr> <td>2 PLACES</td> <td>± 0.13</td> <td>± .01</td> </tr> <tr> <td>1 PLACE</td> <td>± 0.25</td> <td>± .01</td> </tr> <tr> <td>ANGULAR</td> <td colspan="2">± 1 °</td> </tr> </tbody> </table>		mm	INCH	4 PLACES	± .005	± .0005	3 PLACES	± .005	± .0005	2 PLACES	± 0.13	± .01	1 PLACE	± 0.25	± .01	ANGULAR	± 1 °		<b>DIMENSION STYLE</b> IN/MM	<b>SCALE</b> 1:1	<b>DESIGN UNITS</b> METRIC	 <b>THIRD ANGLE PROJECTION</b>
				mm	INCH																			
4 PLACES	± .005	± .0005																						
3 PLACES	± .005	± .0005																						
2 PLACES	± 0.13	± .01																						
1 PLACE	± 0.25	± .01																						
ANGULAR	± 1 °																							
<b>DRAFT WHERE APPLICABLE MUST REMAIN WITHIN DIMENSIONS</b>	<b>MATERIAL NO.</b> 747270001	<b>DOCUMENT NO.</b> SD-74727-001	<b>TITLE</b> 1X2 SFP LIGHT PIPE ASSEMBLY, BACK-TOP	 <b>MOLEX INCORPORATED</b>	<b>SHEET NO.</b> 5 OF 5																			