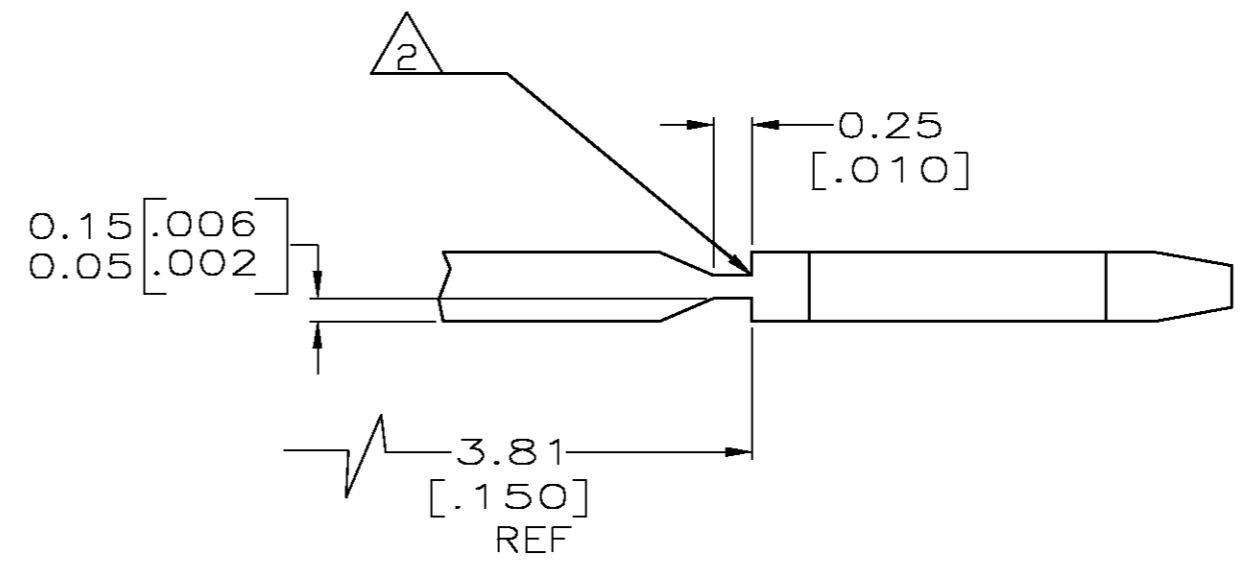
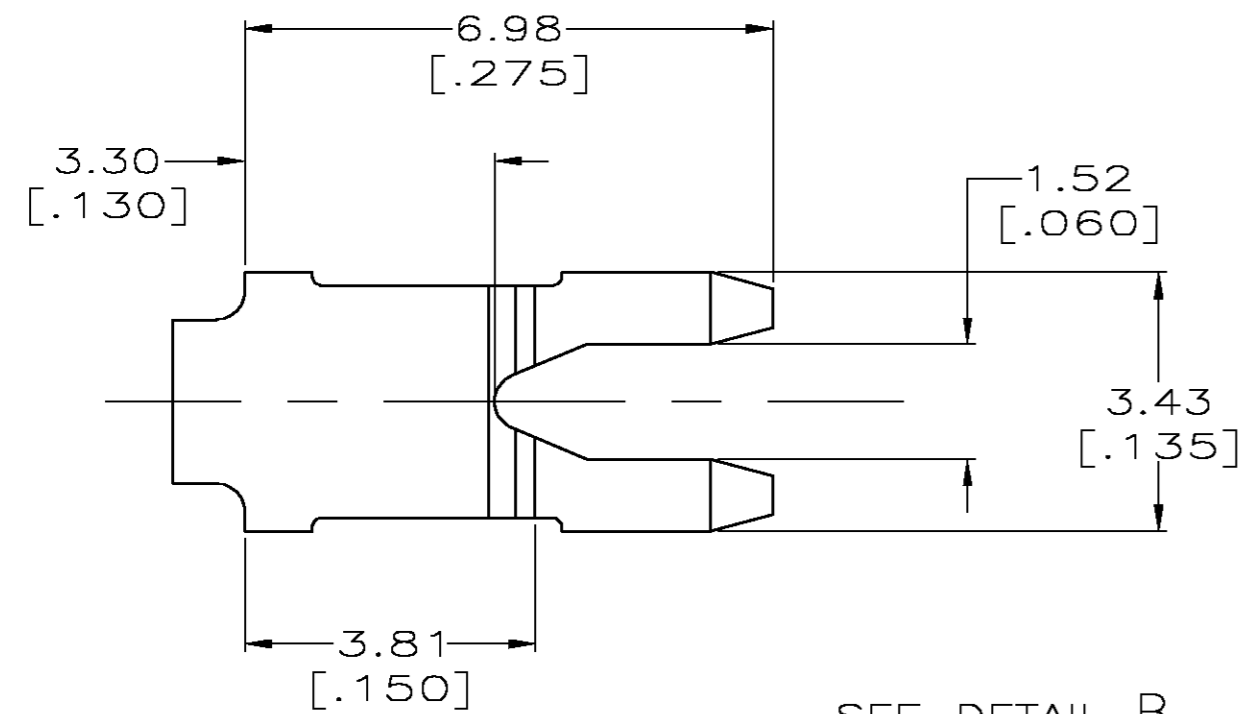


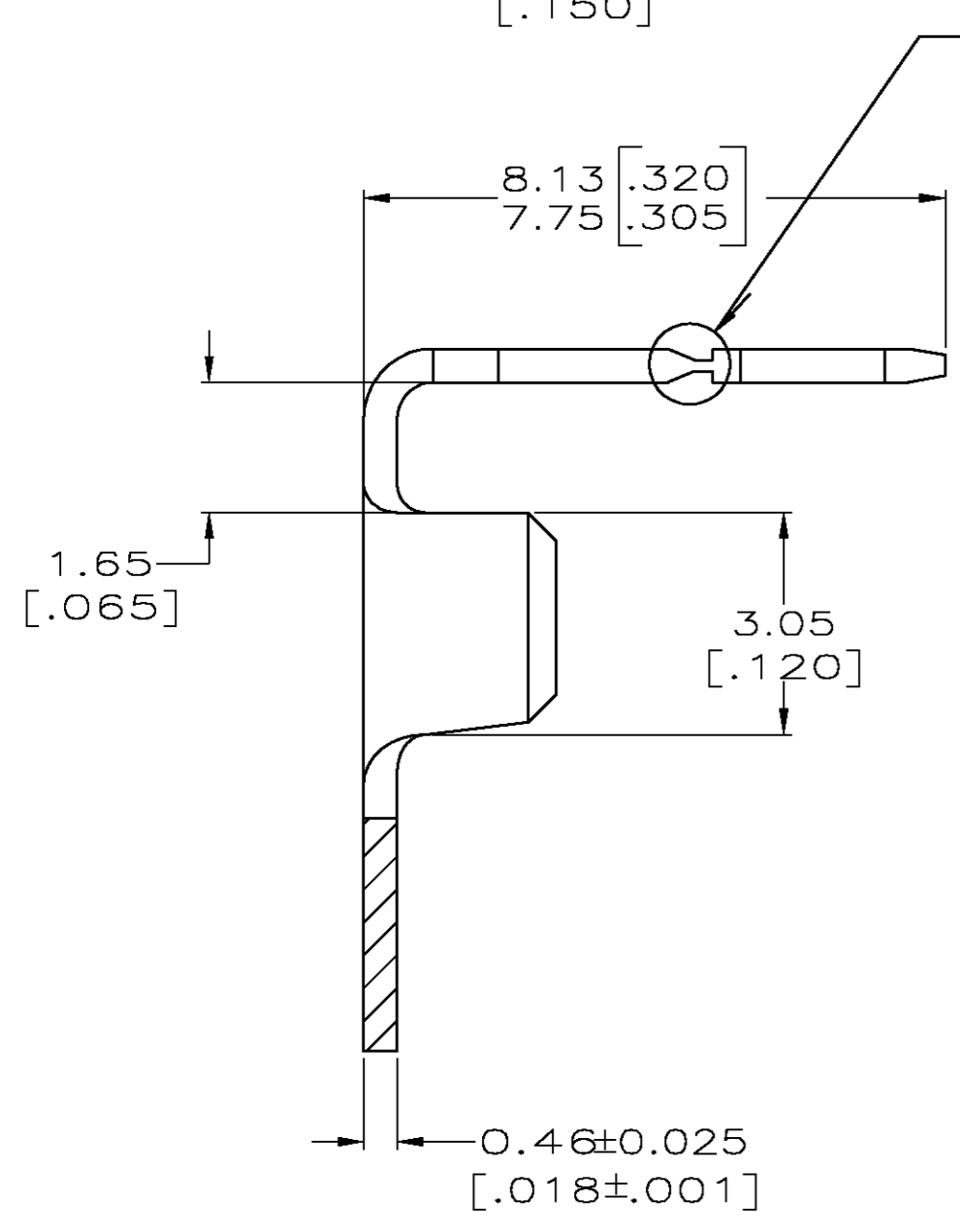
THIS DRAWING IS UNPUBLISHED. RELEASED FOR PUBLICATION  
 © COPYRIGHT BY TYCO ELECTRONICS CORPORATION. ALL RIGHTS RESERVED.

LOC		DIST		REVISIONS			
P	LTR	DESCRIPTION	DATE	DWN	APVD		
AF	50	J	REVIS PER 0G3A-0750-02	18DEC02	MF	KR	

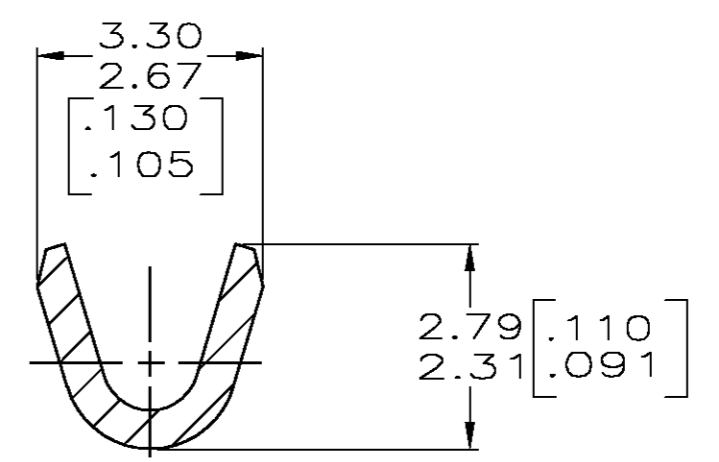
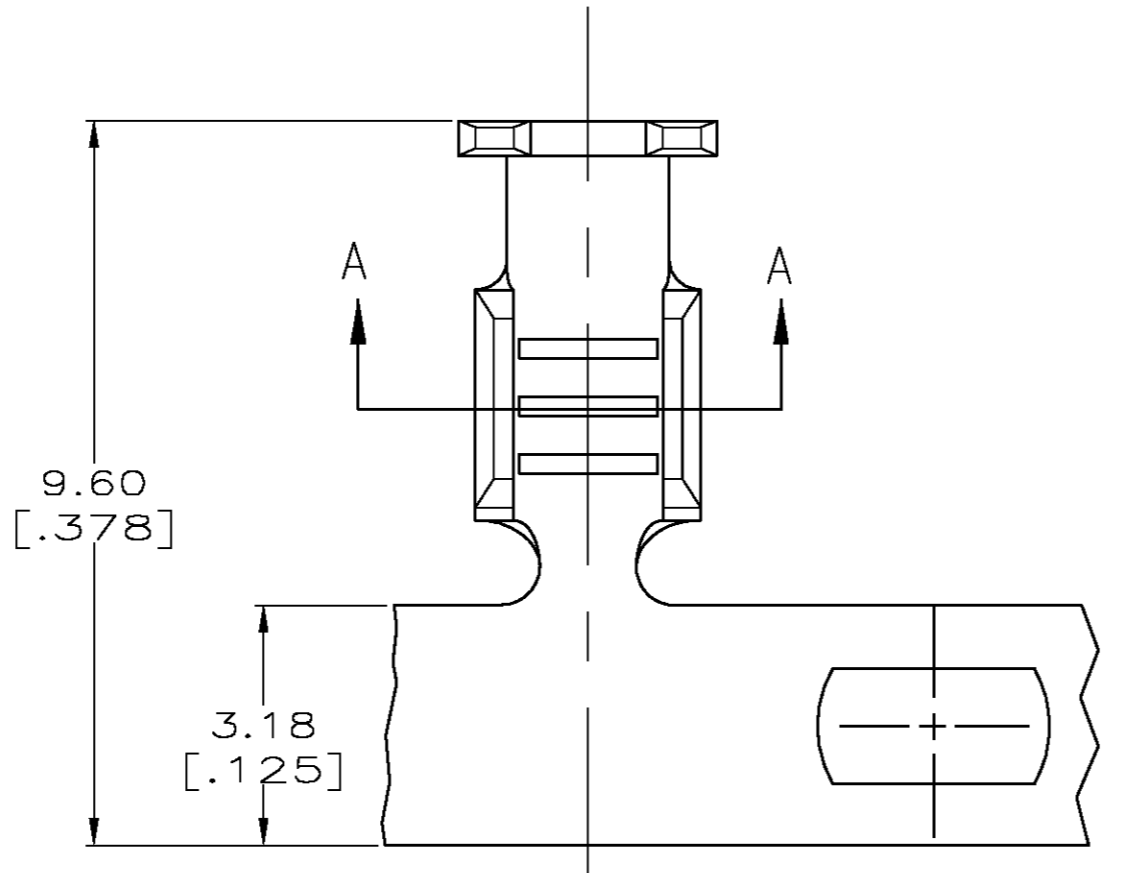
1 CONTINUOUS STRIP ON REELS WITH TERMINALS LOCATED ON  $9.14 \pm 0.08$  [ $.360 \pm .003$ ] CENTERS.  
 2 FOR OPTIMUM RETENTION IN POKE-IN TYPE MAG-MATE TERMINALS, THE SERRATION AS SHOWN MUST BE ENGAGED WITH THE EDGE OF THE LEAF



DETAIL B  
SCALE 20:1



SEE DETAIL B



SECTION A-A

0.30-0.8mm [22-18] AWG	62895-1
WIRE RANGE	PART NUMBER

THIS DRAWING IS A CONTROLLED DOCUMENT.		DWN M.S. FEHER 18DEC2002	Tyco Electronics Corporation Harrisburg, PA 17105-3608	
DIMENSIONS: INCHES		CHK K.A. RANDOLPH 18DEC2002	NAME	
TOLERANCES UNLESS OTHERWISE SPECIFIED:		APVD K.A. RANDOLPH 18DEC2002	TAB, POKE-IN, MAG-MATE™	
0 PLC ± -	1 PLC ± -	PRODUCT SPEC 108-22045	SIZE A2	CAGE CODE 00779
2 PLC ± 0.25 [.010]	3 PLC ± -	APPLICATION SPEC 114-2050	DRAWING NO C=62895	RESTRICTED TO -
4 PLC ± -	ANGLES ± -	WEIGHT -	SCALE 10:1	SHEET 1 OF 1
MATERIAL 081 BRASS	FINISH 0.000381 [.000015] MIN PRE-TIN PLATE	CUSTOMER DRAWING	REV J	

CUSTOMER DRAWING