



## Test Procedure for the LC709203F-01 Evaluation Board

### *Scope*

The LC709203F measures the remaining power of a 1-cell lithium-ion battery. This product uses a unique correction technology to make battery temperature and voltage measurements. With this technology high precision measurement can be made without the need for an external sense resistor. The following is a manual that describes how to use the Fuel Gauge Interactive Software.

### Contents

Overview .....	3
Evaluation Kit .....	3
Connection Instructions.....	5
Evaluation Procedures.....	6
Graphical Analysis .....	15
Smartphone Evaluation Example.....	18
FAQ'S.....	20
Related Documents .....	20
Revision History.....	20



## 1. Overview

The LC709203F is an IC that measures the remaining power of a 1-cell lithium-ion battery and displays the Relative State of Charge (RSOC). This product reduces fuel gauge errors with a unique correction technology during measurement of battery temperature and voltage. The LC709203F has the option of four possible battery profiles to select from for best precise RSOC readings. This technology has inherent high precision without the need for an external sense resistor.

## 2. Evaluation Kit

### 2.1 Evaluation Board for LC709203F Fuel Gauge

Evaluation Board Part Numbers:

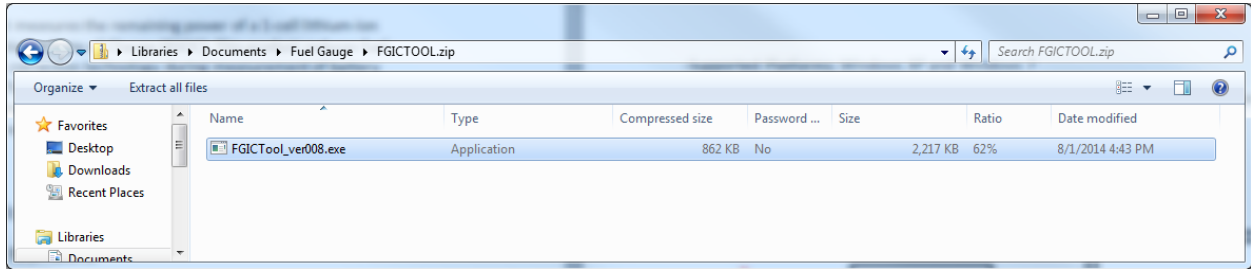
- 1) LC709203FQH-01-GEVB for VDFN8 Package
- 2) LC709203FXE-01-GEVB for WLCSP9 Package



-Easy to use: Minimal Connections required



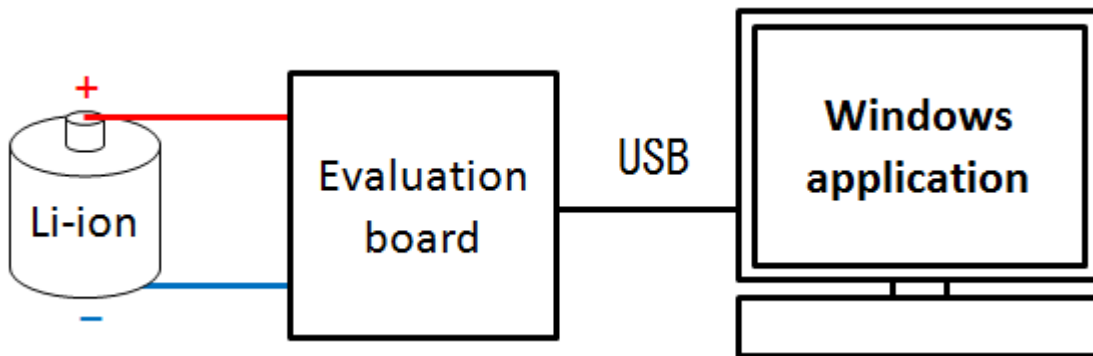
## 2.2 Fuel Gauge Interactive Software



-Supported Platforms: Windows XP and Windows 7

[Fuel Gauge software](#) can be found on the ON Semiconductor Website at onsemi.com and searching part #LC709203F.

## 2.3 Evaluation Board Block Diagram





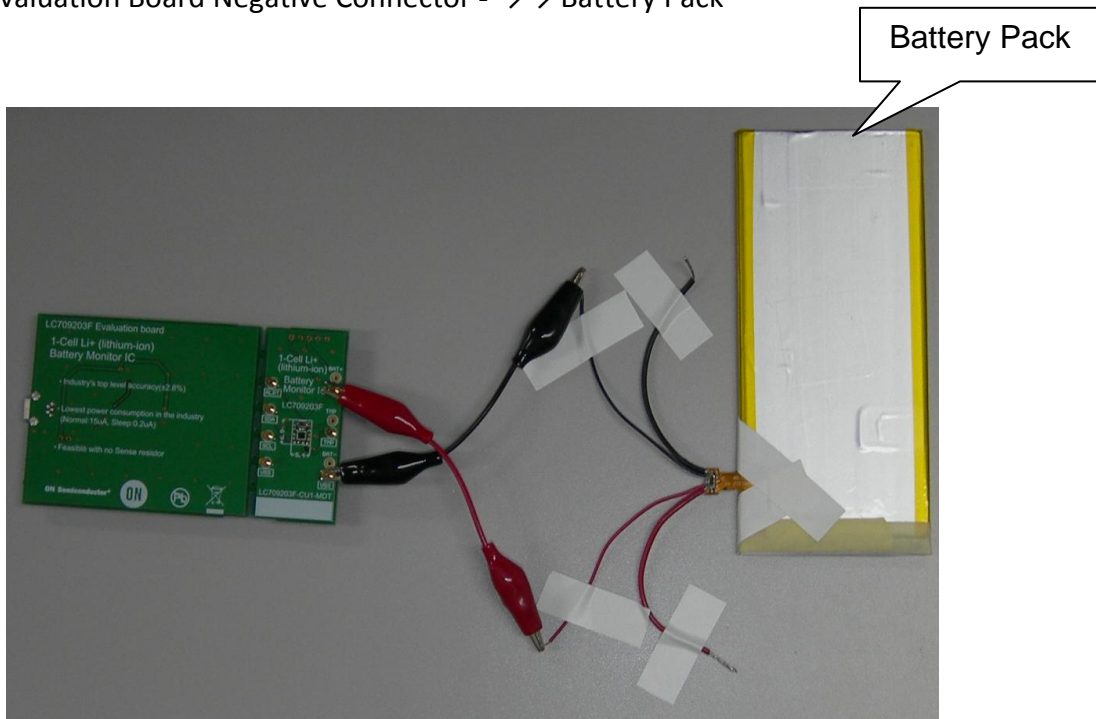
### 3. Connection Instructions

#### 3.1 Connecting of Evaluation Board

-Connect

Evaluation Board Positive Connector + →→ Battery Pack +

Evaluation Board Negative Connector - →→ Battery Pack -

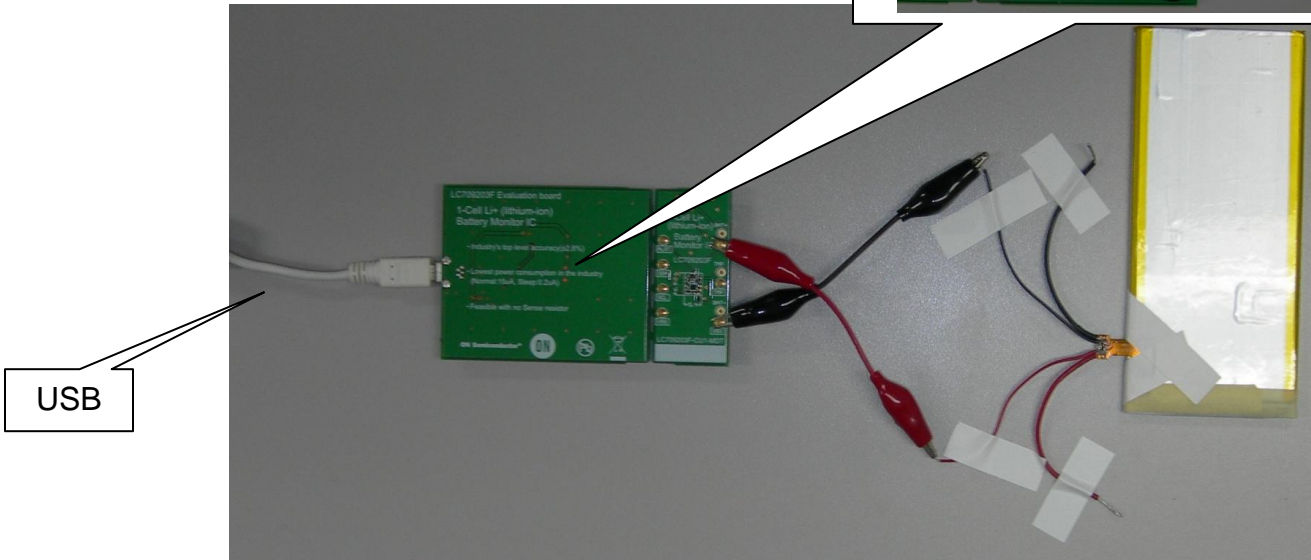
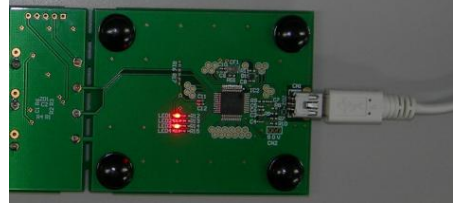




### 3.2 Connection to PC

-Connect USB cable to Evaluation Board

LED1 and LED3 will turn on (backside) with proper connection

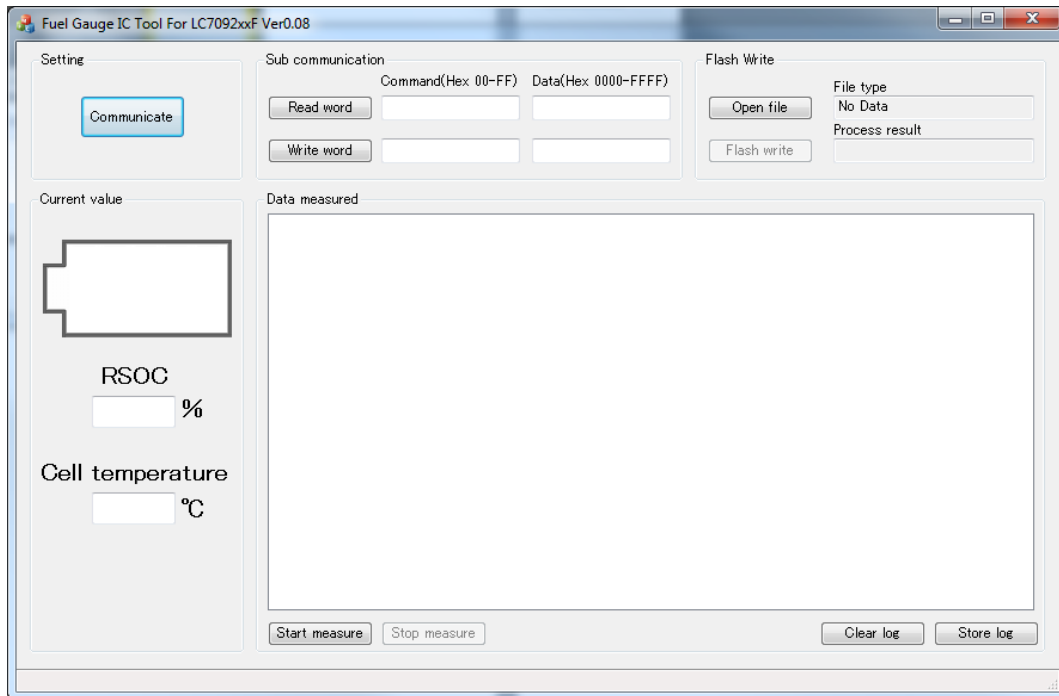




## 4. Evaluation Procedures

### 4.1 Software Start-Up

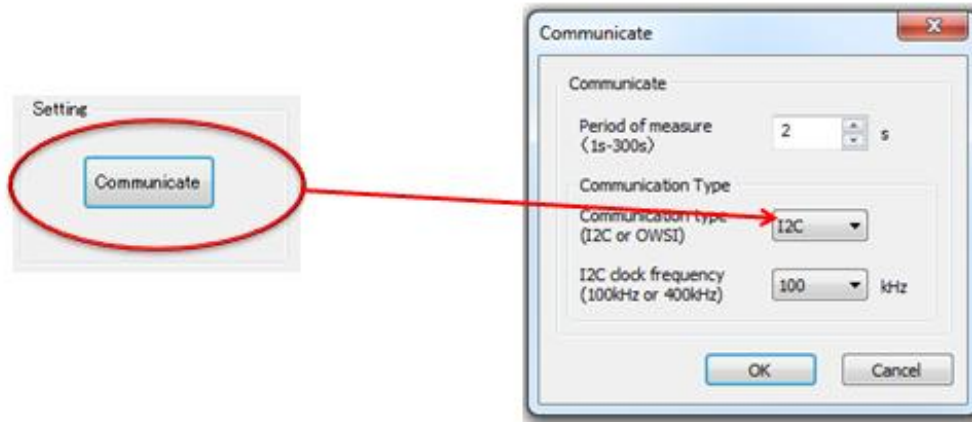
-Start program *FIGICTool\_ver008.exe*



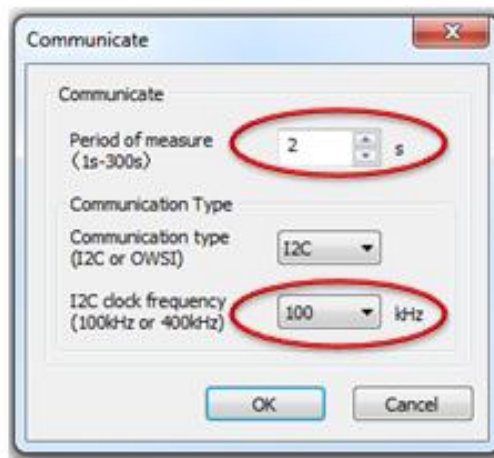


## 4.2 Communication Type Selection

-Select communication type: I<sup>2</sup>C



-Select desired time interval and frequency:



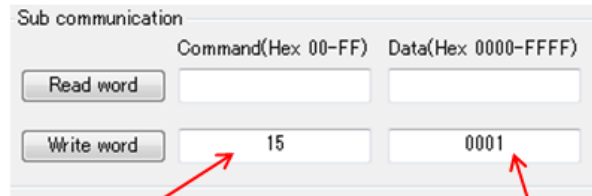
### 4.3 Changing IC Power Mode

-Change mode of Fuel Gauge to 'Operational Mode'

Do the following in the *Write Word Sub Communication* window

Input [15] in Command box

Input [0001] in Data box



Sub communication

Command(Hex 00-FF)    Data(Hex 0000-FFFF)

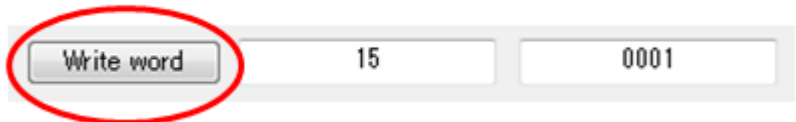
Read word       

Write word       

Command Code	Slave Functions	Status	Range	Unit	Initial Value
0x15	IC Power Mode	R/W	0x0000 to 0x0002	0x0000: Testing Mode 0x0001 Operational Mode 0x0002: Sleep Mode	---

Press [Write Word] to complete writing register 0x15 (**Twice**)

It is recommended to do this task twice, once for a 'wake up' and second to set Fuel Gauge in to 'Operational Mode'.



Write word       

\*While powering on Fuel Gauge, IC starts up in sleep mode. It is essential to ensure IC is set to 'Operational Mode' for accurate measurement.





### 4.4 Impedance Path Assignment

Account for impedance from battery up too Fuel Gauge

Do the following in the *Write Word Sub Communication* window

Input [0B] in Command box

Input [XXXX] in Data box

Command Code	Slave Functions	Status	Range	Unit	Initial Value
0x0B	Adjustment Pack Application	R/W	0x0000 to 0xFFFF	Value	---

Press [Write Word] to complete writing register 0x0B

\* This register accounts for the impedance track from the battery to Fuel Gauge. This impedance path can include: Protection IC’s, long leads, and internal resistance.

## 4.5 Battery Profile Assignment

Assign correct batter profile, for best accurate measurements.  
 Do the following in the *Write Word Sub Communication* window  
 Input [12] in Command box  
 Input [000X] in Data box



Command Code	Slave Functions	Status	Range	Unit	Initial Value
0x12	Default or Alternative Type Select	R/W	0x0000 or 0x0001	Please Refer to Table 1	0x0000

Press [Write Word] to complete writing register 0x12



The LC709203F has the option of having either battery profile 301 or 504 pre-loaded. Each battery profile has two optional battery types to select from. Selecting the correct battery profile and type is crucial for accurate results. Please review Table 1 in order to select correct battery profile and type.

Table 1: Table of Battery Profiles and Types

IC-Type	Nominal/Rated Voltage	Charging Voltage	Battery Type	Battery Profile
LC709203F-01	3.7 V	4.2V	Type 01	301
	3.8V	4.35V	Type 03	
	Any Type		Re-Scaling Required	
LC709203F-04	Use only for UR-18650ZY (Panasonic)		Type 04	504
	Use only for ICR18650-26H (Samsung)		Type 05	
	Any Type		Re-Scaling Required	



### 4.6 Initialization of Battery Capacity

For best results initialize battery capacity.

Do the following in the *Write Word Sub Communication* window

Input [07] in Command box

Input [AA55] in Data box



Command Code	Slave Functions	Status	Range	Unit	Initial Value
0x07	Initial RSOC	W	0xAA55	Value	---

Press [Write Word] to complete writing register 0x07



\*This will assign the most accurate Relative State of Charge (RSOC) of the battery being monitored



### 4.7 Thermistor Mode

The LC709203F has the option of using a thermistor for cell temperature measurements. The following steps show how to enable the thermistor. *Upon start up LC709203F has default setting with thermistor mode disabled.*

Do the following in Sub Communication window

Input [16] in Command box

Input [0001] in Data box

Sub communication window showing Command(Hex 00-FF) and Data(Hex 0000-FFFF) fields. The 'Write word' button is active, with '16' in the Command box and '0001' in the Data box. Red arrows point from the table below to these fields.

Command Code	Slave Functions	Status	Range	Unit	Initial Value
0x16	Status Bit	R/W	bit 0: Thermistor Mode bit 1~15 : Reserved (fix 0)	0: disable 1: enable	0x0000

Press [Write Word] to enable Thermistor

Close-up of the 'Write word' button in the Sub communication window, circled in red. The Command box contains '16' and the Data box contains '0001'.

### 4.8 Thermistor $\beta$ Assignment

Assign correct  $\beta$  value of thermistor being used.

Ex.

Part Number	Resistance (25°C) (ohm)	B-Constant (25-50°C) (K)	B-Constant (25-80°C) Reference Value) (K)	B-Constant (25-85°C) Reference Value) (K)	B-Constant (25-100°C) Reference Value) (K)	Permissible Operating Current (25°C) (mA)	Rated Electric Power (25°C) (mW)	Typical Dissipation Constant (25°C) (mW/°C)
NCP21XM221J03RA	220 ±5%	3500 ±3%	3539	3545	3560	3.00	200	2
NCP21XQ471J03RA	470 ±5%	3650 ±3%	3688	3693	3706	2.00	200	2
NCP21XQ102J03RA	1.0k ±5%	3650 ±3%	3688	3693	3706	1.40	200	2
NCP21XW222J03RA	2.2k ±5%	3950 ±3%	3982	3987	3998	0.90	200	2
NCP21XM472J03RA	4.7k ±5%	3500 ±3%	3539	3545	3560	0.65	200	2
NCP21XV103J03RA	10k ±5%	3900 ±3%	3930	3934	3944	0.44	200	2
NCP21XW153J03RA	15k ±5%	3950 ±3%	3982	3987	3998	0.36	200	2
NCP21XW223J03RA	22k ±5%	3950 ±3%	3982	3987	3998	0.30	200	2
NCP21WB333J03RA	33k ±5%	4050 ±3%	4101	4108	4131	0.24	200	2
NCP21WB473J03RA	47k ±5%	4050 ±3%	4101	4108	4131	0.20	200	2
NCP21WF104J03RA	100k ±5%	4250 ±3%	4303	4311	4334	0.14	200	2

Do the following in Sub Communication window

Input [06] in Command box

Input [XXXX] in Data box

Sub communication window showing 'Write word' with Command (Hex 00-FF) set to '06' and Data (Hex 0000-FFFF) set to 'XXXX'.

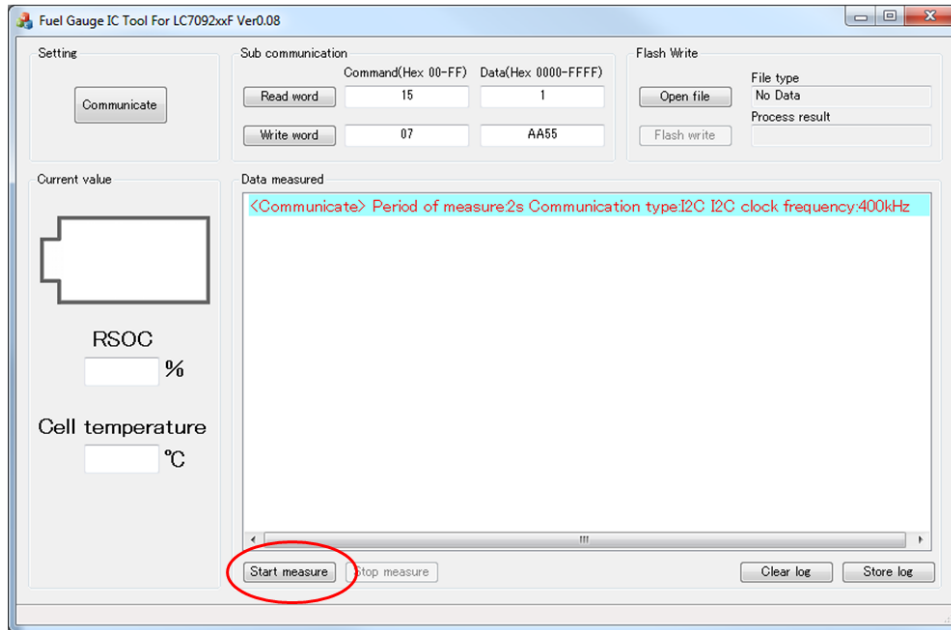
Command Code	Slave Functions	Status	Range	Unit	Initial Value
0x06	Thermistor $\beta$	R/W	0x0000 or 0xFFFF	$\beta$	0x0D34

Press [Write Word] to assign Thermistor  $\beta$  constant

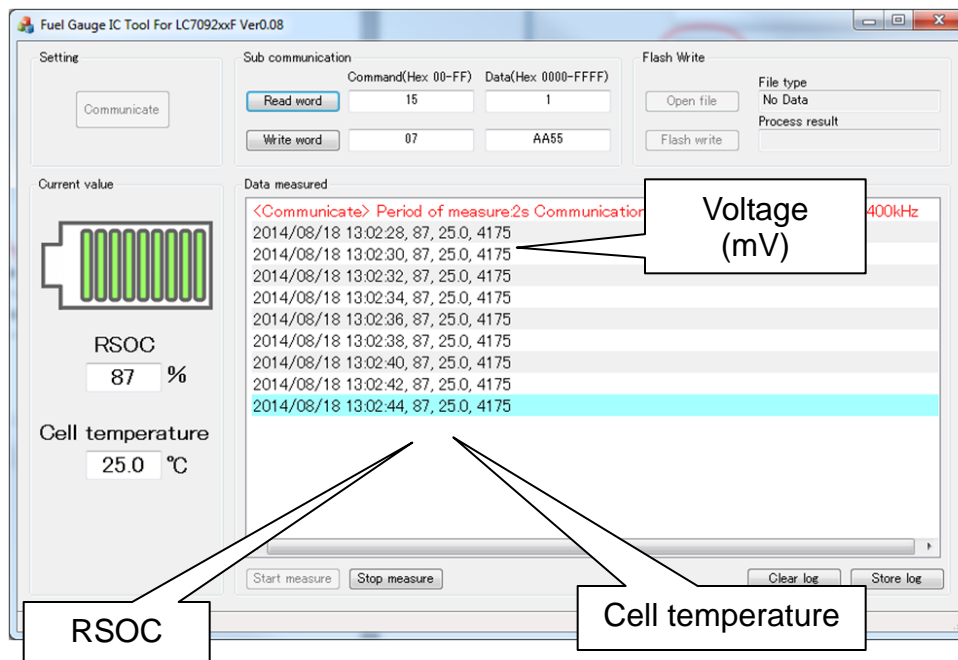
Close-up of the 'Write word' button in the Sub communication window, which is circled in red. The Command field contains '06' and the Data field contains 'XXXX'.

## 4.9 Start of Measurements

Press [Start Measure] to begin measurements



## 4.10 Sample Measurements



With a successful connection you will see screen as above



## 5 Graphical Analysis

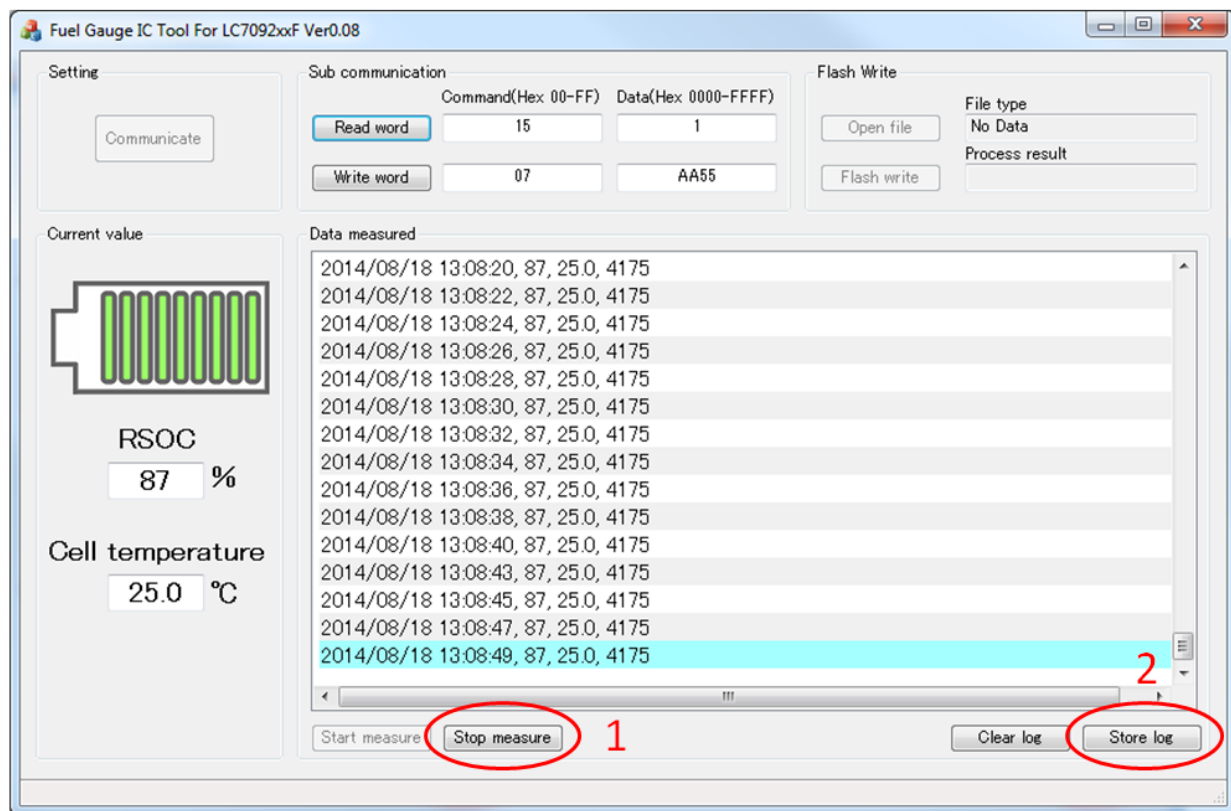
The LC709203F software has the option to save all measurements via a text file. Measured data can be converted in to excel format. Once in excel format, data can be plotted for analysis. A graph can give a great visual to see how the LC709203F tracks voltage and RSOC over time.

### 5.1 Storing Measured Data

To save data to a text file, do the following:

Press [Stop measure]

Press [Store log]



Measured Data becomes a txt file

Save Fuel Gauge Data *Example.txt*



## 5.2 Converting Fuel Gauge Data

Convert .txt file to .csv in order to create a graph

```

FullDischargeTest.txt - Notepad
File Edit Format View Help
<Communicate> Period of measure:2s Communication type:I2C I2C clock frequency:400kHz
2014/06/10 11:48:03, 96, 25.0, 4144
2014/06/10 11:48:05, 96, 25.0, 4144
2014/06/10 11:48:07, 96, 25.0, 4144
2014/06/10 11:48:09, 96, 25.0, 4144
2014/06/10 11:48:11, 96, 25.0, 4140
2014/06/10 11:48:13, 96, 25.0, 4144
2014/06/10 11:48:15, 96, 25.0, 4144
2014/06/10 11:48:17, 96, 25.0, 4144
2014/06/10 11:48:19, 96, 25.0, 4140
2014/06/10 11:48:21, 96, 25.0, 4144
2014/06/10 11:48:23, 96, 25.0, 4144
2014/06/10 11:48:25, 96, 25.0, 4144
2014/06/10 11:48:27, 96, 25.0, 4144
2014/06/10 11:48:29, 96, 25.0, 4144
2014/06/10 11:48:31, 96, 25.0, 4144
2014/06/10 11:48:33, 96, 25.0, 4144
2014/06/10 11:48:35, 96, 25.0, 4144
2014/06/10 11:48:37, 96, 25.0, 4144
2014/06/10 11:48:39, 96, 25.0, 4144
2014/06/10 11:48:41, 96, 25.0, 4144
2014/06/10 11:48:43, 96, 25.0, 4144
2014/06/10 11:48:45, 96, 25.0, 4144
2014/06/10 11:48:47, 96, 25.0, 4144
2014/06/10 11:48:49, 96, 25.0, 4144
2014/06/10 11:48:51, 96, 25.0, 4144
2014/06/10 11:48:53, 96, 25.0, 4144
2014/06/10 11:48:55, 96, 25.0, 4144
2014/06/10 11:48:57, 96, 25.0, 4144
2014/06/10 11:48:59, 96, 25.0, 4144
2014/06/10 11:49:01, 96, 25.0, 4144
2014/06/10 11:49:03, 96, 25.0, 4144
2014/06/10 11:49:05, 96, 25.0, 4144
    
```

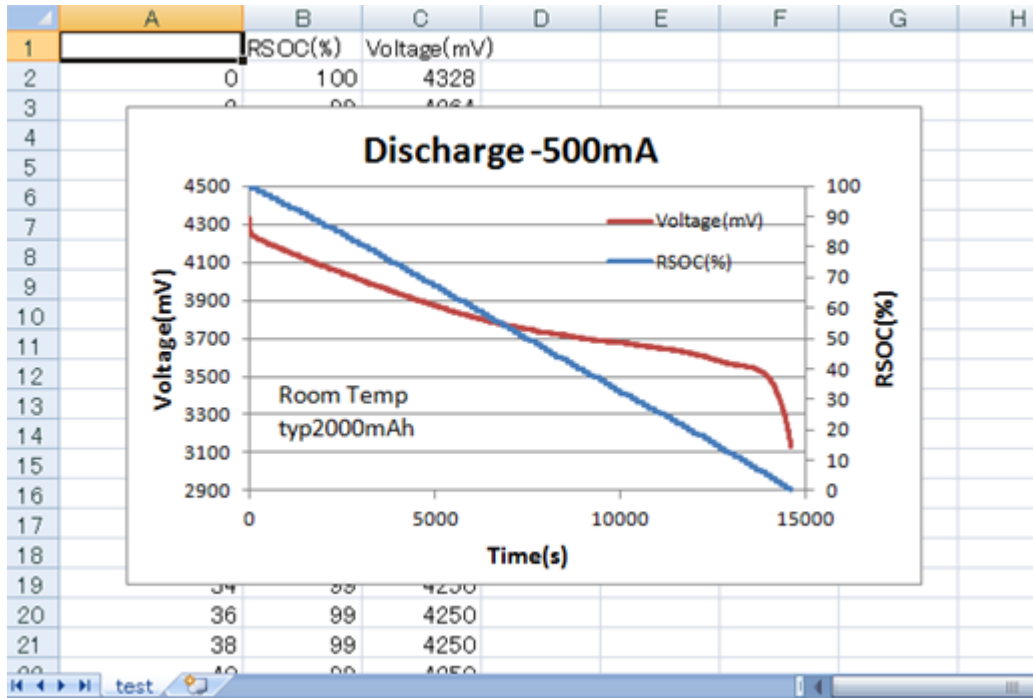
Convert file type Example.txt →Example.csv

	A	B	C	D
1	<Communicate> Period of measure:2s Communication type:I2C I2C clock frequency:400kHz			
2	#####	96	25	4144
3	#####	96	25	4144
4	#####	96	25	4144
5	#####	96	25	4144
6	#####	96	25	4140
7	#####	96	25	4144
8	#####	96	25	4144
9	#####	96	25	4144
10	#####	96	25	4140
11	#####	96	25	4144
12	#####	96	25	4144
13	#####	96	25	4144
14	#####	96	25	4144
15	#####	96	25	4144
16	#####	96	25	4144
17	#####	96	25	4144
18	#####	96	25	4144
19	#####	96	25	4144
20	#####	96	25	4144
21	#####	96	25	4144
22	#####	96	25	4144
23	#####	96	25	4144
24	#####	96	25	4144
25	#####	96	25	4144
26	#####	96	25	4144





### 5.3 Create a Graph



Graph Displays:

- 1) RSOC vs. Time
- 2) Voltage vs. Time

Graph gives a visual representation of how the LC709203F tracks battery voltage while discharging.

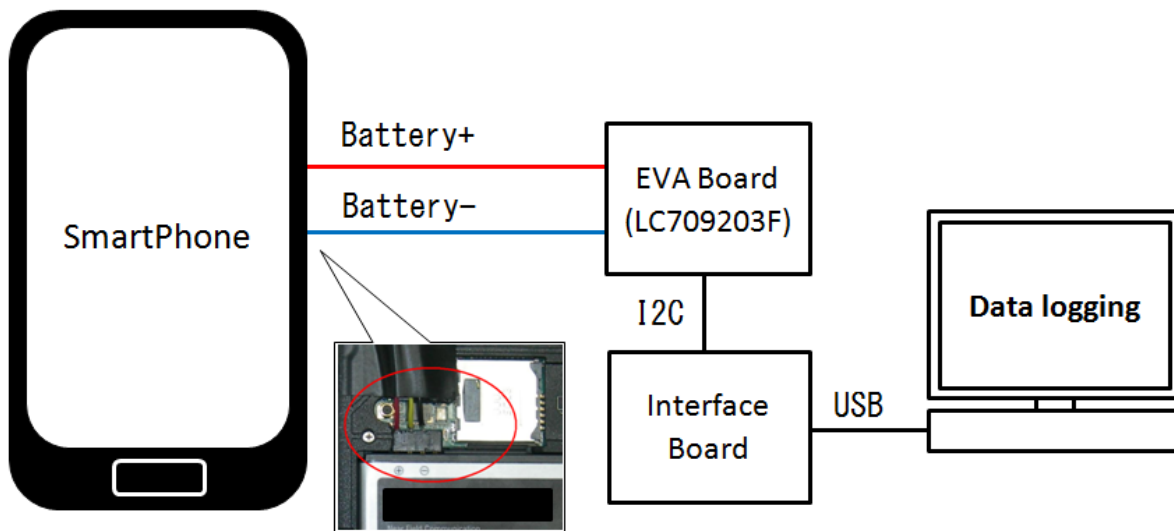
A separate graph to model a charging pattern can be obtained by taking measurements while charging a battery pack using the LC709203F software.



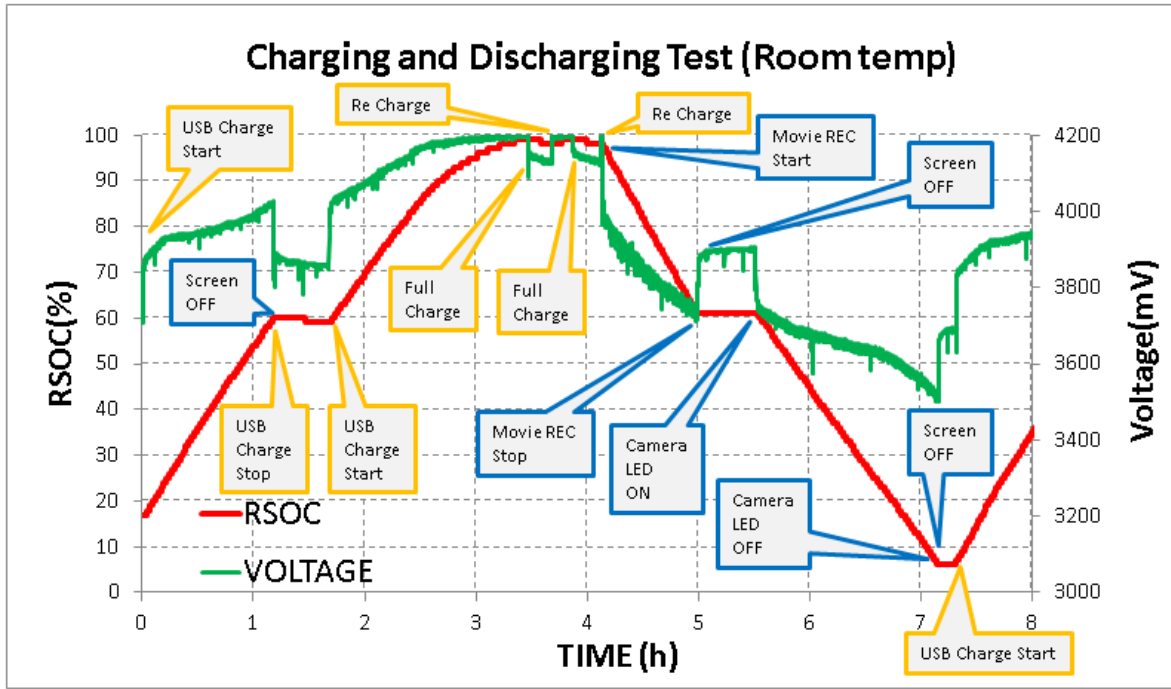
## 6. Smartphone Evaluation Example

The LC709203F Evaluation board can be used to analyze applications. Here is an example of an analysis of a smartphone undergoing charging and discharging conditions.

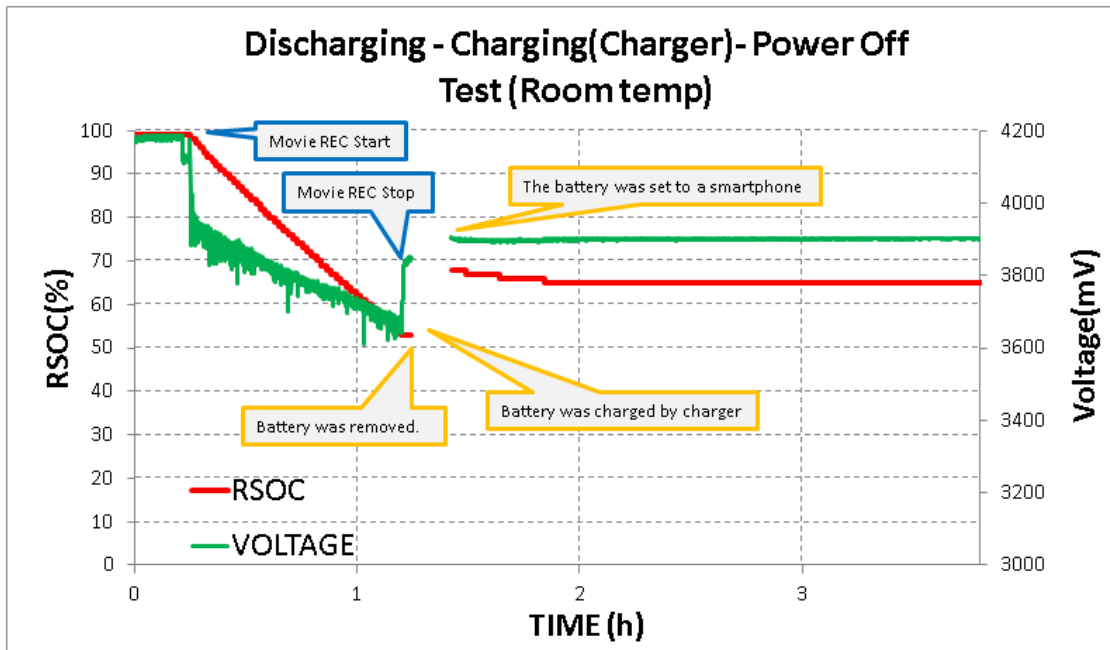
### 6.1 Block Diagram



### 6.2 Testing Results #1



### 6.3 Testing Results #2





### Test Results

Test 1: This test shows the use of a smartphone over an 8 hour window. During this 8 hour window the smartphone went through a charge/discharge state. During charge state the phone was being charged via charger and discharged by using features on smartphone. This graph displays how the LC709203F tracks the voltage level and displays a RSOC value.

Test 2: Smartphone starts off 100% charged then discharges due to recording a movie. The battery is then removed, charged, and then put back in to smartphone. The LC709203F tracks the voltage level and displays a RSOC value.



## 7. FAQ's

**Q.** How do I know what battery profile to use?

**A.** Battery characteristics are listed on Table 2. If battery you wish to use is not listed on Table 2, please contact ON Semiconductor.

**Q.** Why does my Fuel Gauge continue to display same voltage value?

**A.** Please ensure Fuel Gauge is not in 'Sleep' mode. Following Fuel Gauge Initialization Flow Chart will ensure it reads proper values.

**Q.** What if I order Fuel Gauge with battery profile 301 but need battery profile 504 instead?

**A.** Alternative battery profile can be made available, please contact ON Semiconductor for more information.

**Q.** How do I load a new battery profile to LC709203F?

**A.** After receiving new battery profile from ON Semiconductor please use software to *Flash* the new profile on to Fuel Gauge.

**Q.** I tried loading a new battery profile but I am receiving a Flash Write error?

**A.** Please insure that IC is not in 'Sleep mode, please follow Fuel Gauge initiation to place IC in 'Operational' mode.

## 8. Related Documents

Supporting information such as: Datasheets, Application Notes, Evaluation Board Documents and Software are available for the LC709203F. To obtain the most updated documentation please visit the ON Semiconductor Web site at [www.onsemi.com](http://www.onsemi.com) and search part number: LC709203F.

- 1) LC709203F, *Battery Monitor IC for 1-Cell Lithium-ion Li+ Data Sheet* ([Data Sheet](#))
- 2) LC709203F, *Application Note* ([App. Note](#))
- 3) LC709203F, *Evaluation Board Documents* ([Evaluation Board Docs](#))
- 4) LC709203F, *Software FGICTool* ([Software](#))



## 9. Revision History

Version	Date	Details
1.0	08/20/2014	Initial Release