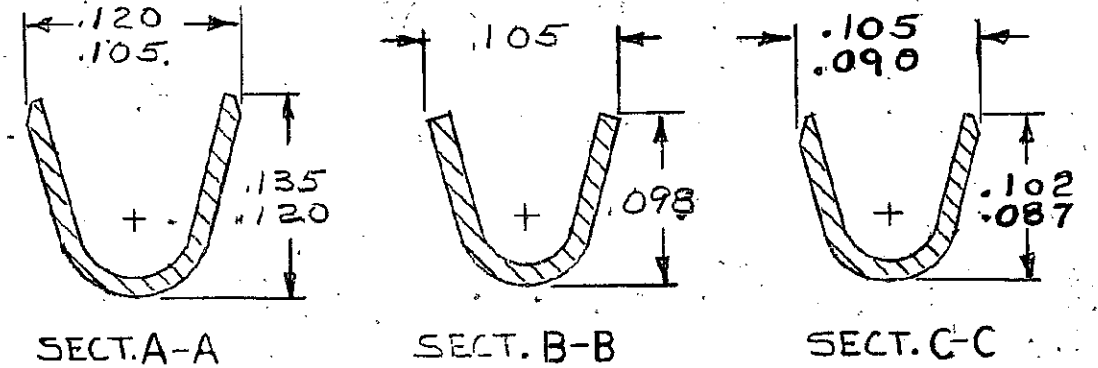
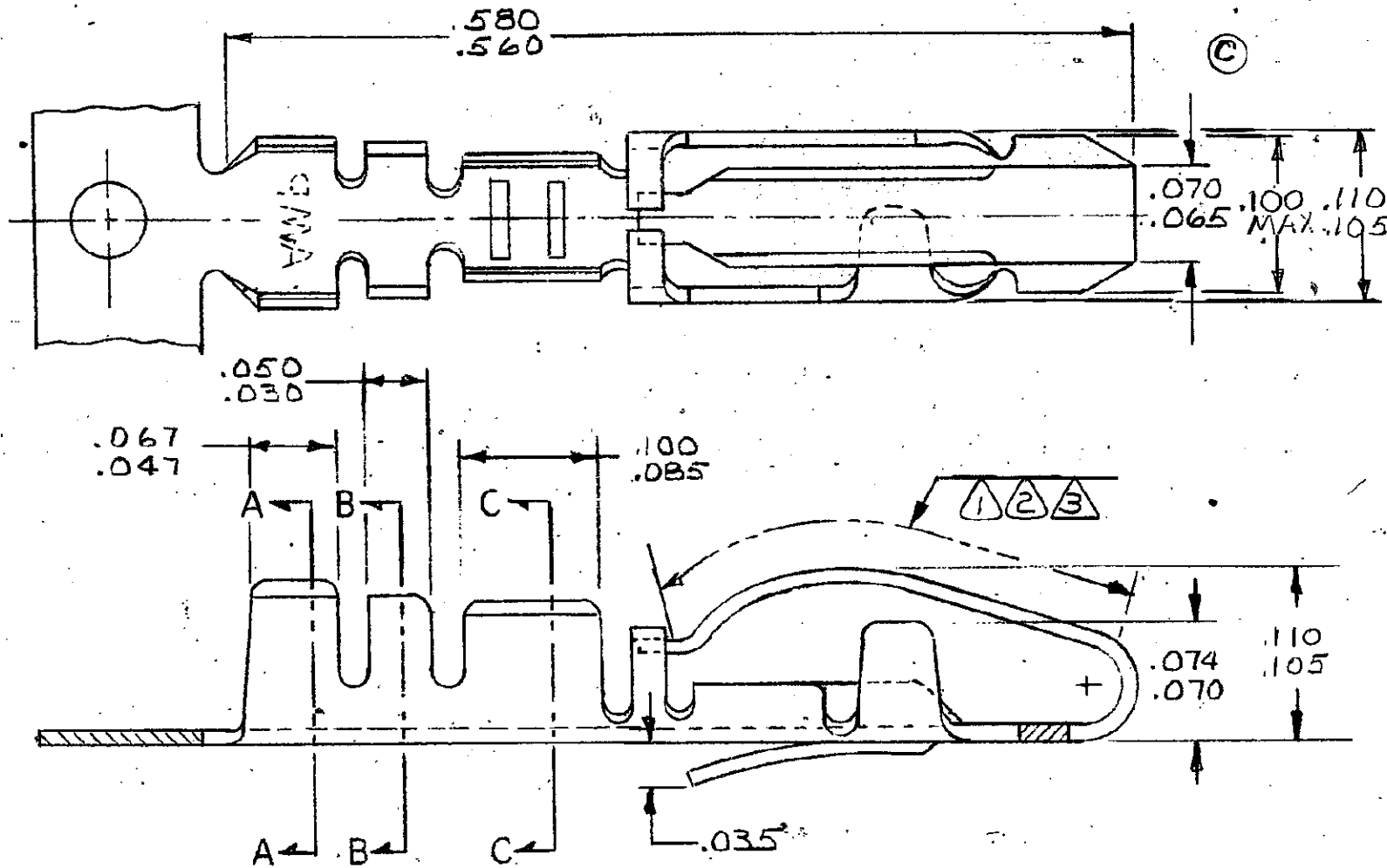


DRAWING MADE IN AMERICAN PROJECTION

© 1970 BY AMP INCORPORATED. ALL RIGHTS RESERVED. AMP PRODUCTS COVERED BY PATENTS AND/OR PATENTS PENDING.

✓	F	REV PER AD1735	722-87
✓	G	OBS-5 ECN 0679-93	7-93
✓	H	REV PER 0010-4612-95	720-95
✓	J	REV PER EC 0320-349-97	NS 24 NOV 97
	J1	REVISED PER - ECO-09-026444	AEG 27 NOV 09

REVISIONS				
ZONE	LTR	DESCRIPTION	DATE	APPROVED
	B	REDRAWN & REVISED DR 378B	4-18-73	M.Z.
	C	REVISED WIRE BARREL DR 4074	5-16-74	M.Z.
	C1	ADDED -5,-6 m.s. 4142	6-6-74	M.Z.
	C2	ADDED L.P. P/N m.s. 4760	5-3-76	
	D	REVISED m.s. 7818	2-82	
✓	E	REVISED PER AD1327	7-23-86	SP/NOUR 8/6/86



- ① .000010 GOLD ON CONTACT AREA, OVER .000050 NICKEL, REMAINDER OF CONTACT NICKEL PLATED,
- ② .000030 GOLD ON CONTACT AREA, OVER .000050 NICKEL, REMAINDER OF CONTACT NICKEL PLATED.
- ③ .000015 GOLD ON CONTACT AREA OVER .000050 NICKEL, REMAINDER OF CONTACT NICKEL PLATED.
- ④ 583555-3 SUPERSEDED

A	PART No. STD. REELING R-L FEED	PART No. MINI-APPLICATOR L-R FEED	FINISH	WIRE RANGE	INS. RANGE	PART No. LOOSE PIECE
	583555-1	583555-2	①	22-18	.055-.080	
	583555-3	583555-4	②			
	583555-5	583555-6	③			583989-6

UNLESS OTHERWISE SPECIFIED DIMENSIONS ARE IN INCHES TOLERANCES ON: DECIMALS ± .005 ANGLES ±	CONTRACT NO.		AMP AMP INCORPORATED. HARRISBURG, PENNSYLVANIA	
	DR. <i>Rumble</i> 4-18-73			
	MATERIAL		NAME	
	.010 COML. PHOS. BRONZE.		AMP-LEAF CONTACT, STRIP	
APPD. <i>Kaufman</i> 5-21-73		SIZE	CODE IDENT NO.	NUMBER
OTHER APPD.		B	00779	583555
		SCALE	SHEET	
		NTS	1 of 1	